

Lake Country Women's Club



HAPPY SPRING !

It always amazes me how quickly Wisconsin weather can change. Just when we have had enough snow shoveling- a warm southern breeze arrives, just in time. It's a good time to think about our summer Art Festival. Before you know it - July will be here! Hope to See you soon,
 -Cynthia Paris, LCWC President

An Uncommon Wine Experience April 18th, 2015 7-9pm

Join us for our inaugural wine tasting event with a special menu including an extensive selection of wines from around the globe!

Owners Lorelei & Mike Mustas will be donating 10% of sales from both April 17th and 18th!

Wisconsin craft beers and several non-alcoholic options are available.

Please consider donating an item for raffle/ auction. Bring items to March 24th LCWC meeting. All proceeds benefit our LCWC charities.



See you at: Vina Mundi-
 S42 W31428 Hwy 83,
 Genesee Depot, WI
www.vina-mundi.com

LCWC

Tuesday March 24th

Social 6:30pm

Revere's Wells St

Join us for an informal social. Meet other members and guests. Grab a cocktail from the upstairs bar and come on down!

We usually meet in the lower level room. Check in with the Hostess and she will direct you.

Tuesday March 24th

LCWC Meeting- 7:00 pm

Revere's Wells St

Both members and guests are encouraged to stay and hear about latest news and events. This month our top agenda items are: the upcoming Wine tasting fundraiser and planning for Art Festival

Helping Hands:

Food pantry donations-
 see Page3 for detailed list

Website updated:

See our new look on the LCWC website. Holly will share information at our meeting on the new members only area. Visit us :
Lakecountrywomensclub.org

40th annual Lake Country Art Festival Saturday July 11th 2015 9am- 4pm

Art Festival Planning is in full gear ! The contract with the park is secured for our date.

LCWC members will be signing up for volunteer shifts at our next meeting. We hope all members will plan to volunteer at this event. While most shifts are only 2 hours long- please consider volunteering for a half day or the entire day. It's a great way to give back to your community, and it's a lot of fun! Ask your friends and family if they want to come out and volunteer too.

We are usually in real need of volunteers begin to think about groups that we can contact to volunteer the day art fest. We also need some additional volunteers the day before the art festival to assist with set-up and layout of booth lines.



LCWC Tshirts available

We have blue LCWC tshirts available for members. If you have not received one- see Briana or Chris at meeting checkin.

We wear the shirts at the Art Festival, Community Fest and anytime you want to show support for LCWC !

In the coming month, we will begin to focus on publicity. A press release in both a long and short format, along with photos will be distributed.

All members are encouraged to post our event on websites, social media, etc.

If you would like to volunteer to jury artists, please watch for email announcements.

Art Festival Entertainment:

Looking for some help to find local talent to perform for our 40th year ! It would be great to have the whole day covered in both the main stage area and the centrally located acoustic tent. If you hear someone perform that might be a good fit for us , please pass info along to Patty Mudler- pattymudler@aol.com

Join Patty March 21st for coffee at Mama Ds- and to listen to a potential musician. See page 3 for details



Festival Sponsors:

We will be email the Art Fest Sponsor detail sheet. If you know of a business or individual that would like to help sponsor our event, please contact Ann McCoy

Art Festival Contacts:

Chairperson- Ann McCoy
Co-chair- Mary Kierlieber
Artists- Sheri Wheeler lead;
Tiffany Detvan co-lead.
Entertainment- Patty Mudler;
Children's Area-Stephanie Truttshel
Silent Auction- Laurie Wilson;
Chris Bornhorfer
Delafield Brewhaus-Ann McCoy
Cowboy Kettlecorn; Kona Ice-
Tricia Schelble
Truck ,Water and Ice donations –
Mary Kierlieber;
Operations: Sheryl Kuhary;
Publicity- Ann McCoy,
Mary Kierlieber,
Holli Filmanowicz
Treasurer/ money belts-
Tricia Schelble
Mary Beth Ladd

More Art Fest Coordinators needed: parking, volunteers, artist coffee & Donuts- see Ann Mc Coy for more information

Notes from the Treasurers:

Our club is now part of the AmazonSmile program. For all purchases made from Amazon, our club gets back .5% of eligible purchases. In order for the club to get credit please shop at AmazonSmile at

<http://smile.amazon.com> and select the Lake Country Womans Club as your charitable organization.

It is easy and the club benefits!

Any questions please email Tricia Schelble



Helping Hands Donations for Food Pantry

Basic Food items are always welcome.
Some preferred donation items are:

Cereal & Pasta & Soup	Canned meat (tuna, chicken, ham, Spam)	Peanut butter, Canned fruits & vegetables
Boxed meals/macaroni & cheese	Ingredients for an entire meal, including protein	
<ul style="list-style-type: none"> • Special Diet Program : Low-sodium soups, No- or low-sugar items 	Powdered drink mixes	Fruit packed in water Soy or rice milk

Other Lake Country area community events:

Lake Country Women's club members are often active with a variety of community groups. If you know of news or events- please let us know and we will share on our newsletter and at the end of our monthly meeting.

Wednesday, May 13, 2015:

Spring Bling Luncheon Pewaukee Arts Council. This is the PAAC's 6th annual fashion show, ALL NEW and inter-mixed with art, music, food and fun. Faye Wetzel, from Faye's in Brookfield and Mequon will present a practical educational show. They need a few models too. (Models receive clothing discount.) If you would like more information -please reach out to Juli Garton, Spring Bling Coordinator at [262-370-0904](tel:262-370-0904) or juligarton@gmail.com



Saturday, March 21st 2015:

Mama Ds in Wales, 11:30am

Anyone interested is welcome to join Patty Mudler for coffee and listen to a young musician who may be available for the Art Fest .

Please RSVP **Patty** [262-367-7630](tel:262-367-7630) or pattymudlr@aol.com



April & May – Monday & Thursday 5:30pm at Kettle Moraine State Forest

Join the ranger –led hikes and explore the State Forest trails. every Monday & Thursday is a new trail ! see the website for trailhead listings <http://dnr.wi.gov/topic/parks/name/kms/>



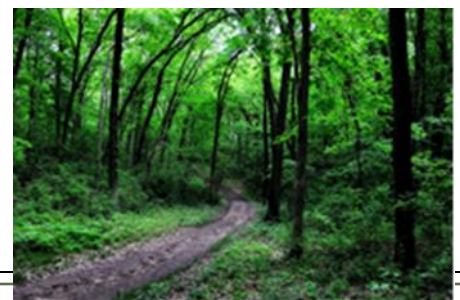
Saturday, March 21, 201:

Lake Country Community Fest,

Food - Entertainment - Health Care Clinics and businesses in the Lake Country area come together to showcase their products and services to the community. Again this year - LCWC will have a booth to promote our club. Volunteers needed for 1-2 hr or all day shifts. **10:00 am-3pm:**

Arrowhead HS, Hartland

www.lakecountrycommunityfest.com



Social Media fans: 'like' Lake Country Womens club on Facebook and share posts.

If you wish to add to next newsletter please send information by April 7th to Cynthia Paris cparisconsulting@gmail.com